

God Is Great

Words and Music by
Marty Sampson

♩ = 154

VERSE 1 & 2

E A B^{sus}



1. All cre - a - tion cries _ to You, _____
2. All cre - a - tion gives _ You praise, _____

5 E A B^{sus}



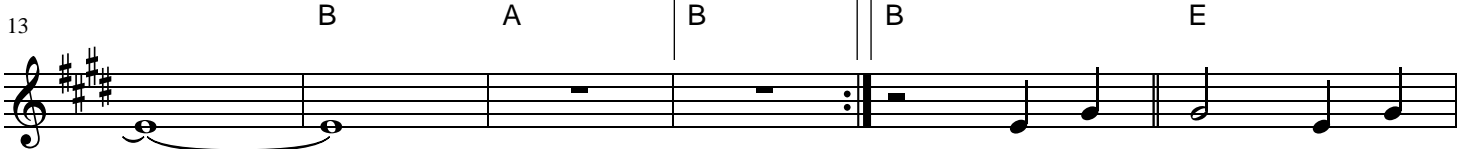
wor-ship - ping _ in Spir - it and _ in truth. _____
You a - lone _ are tru - ly great, _____

9 C#m⁷ A B^{sus} C#m⁷ B A



Glo-ry to ___ the Faith - ful One, ___ Je - sus Christ, _ God's Son. .
You a - lone _ are God _ who reigns ___ for e - ter - ni - ty. _

13 B A 1. B 2. B **CHORUS** E



_____ God is great, and His

19 A B A E



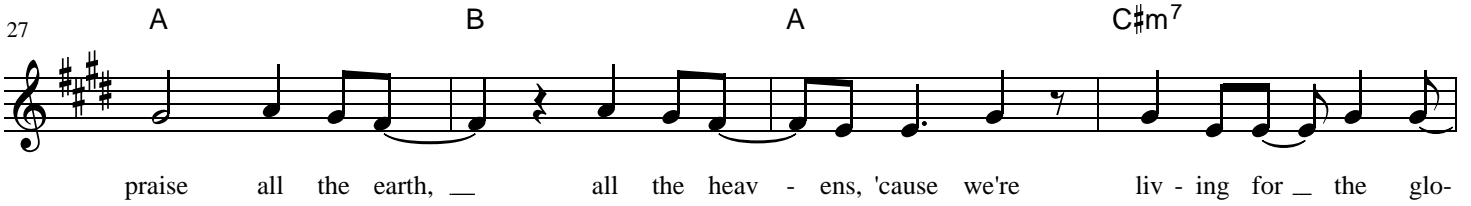
praise fills the earth, _ fills the heav - ens. And Your name will _ be praised .

23 C#m⁷ B^{sus} E



_____ through all _ the world. _____ God is great, sing His

27 A B A C#m⁷



praise all the earth, all the heav - ens, 'cause we're liv - ing for the glo -

2nd time to Coda ⊕

INSTRUMENTAL

31 A B^{sus} A C#m⁷



- ry of Your name. The glo - ry of Your name.

VERSE 3

36 B^{sus} E A B^{sus}

2



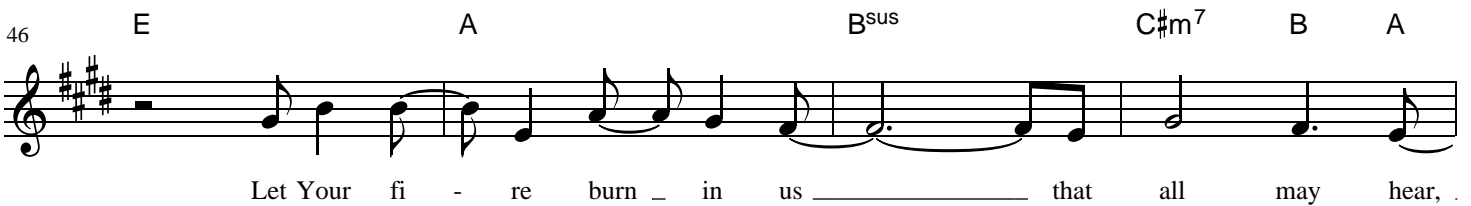
3. All to You, O God, we bring.

42 E A B^{sus}



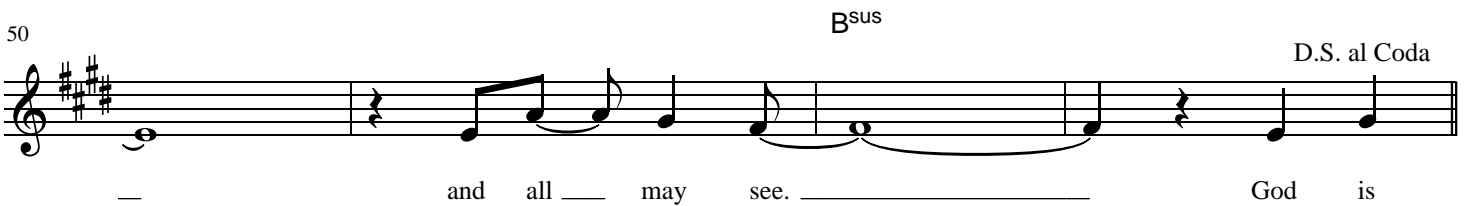
Je - sus, teach us how to live.

46 E A B^{sus} C#m⁷ B A



Let Your fi - re burn in us that all may hear,

50 B^{sus} D.S. al Coda



and all may see. God is

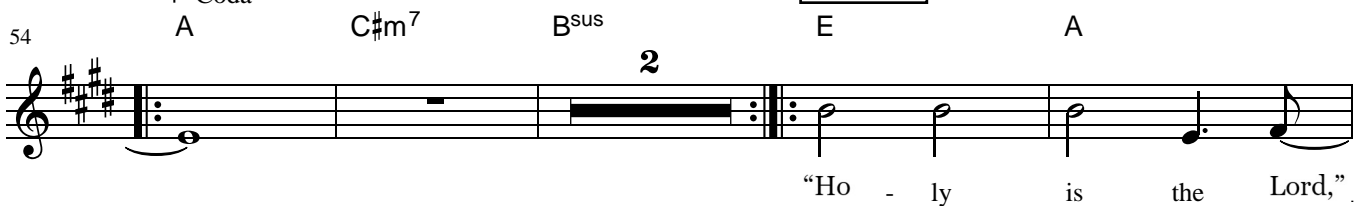
INSTRUMENTAL

⊕ Coda

BRIDGE

54 A C#m⁷ B^{sus} E A

2



"Ho - ly is the Lord,"

60 B^{sus} $C\#m^7$ A B^{sus}

the whole _ earth sings, _ the whole _ earth sings. _____

65 1, 2, 3. 4. **CHORUS** E A

_____ God is great, and His praise fills the earth, .

69 B A E

_____ fills the heav - ens. And Your name will _ be praised .

72 $C\#m^7$ B^{sus} E

_____ through all _ the world. _____ God is great, sing His

76 A B A $C\#m^7$

praise all the earth, _ all the heav - ens, 'cause we're liv - ing for _ the glo-

ENDING A B^{sus} $C\#m^7$

- ry of _ Your name. _ 'Cause we're liv - ing for _ the glo -

84 A B^{sus}

- ry of _ Your name. _____ The glo - ry of _ Your name. .

87

E

A

B

A

E

Musical notation for guitar on a single staff. It starts with a treble clef, a key signature of three sharps (F#, C#, G#), and a common time signature. The first measure contains a whole note chord with a fermata. The next three measures contain whole rests. The final measure contains a whole note chord with a fermata and a diamond-shaped fingering symbol on the staff. A horizontal line is drawn below the first measure.